

SAMPLE BALLOT

--	--	--

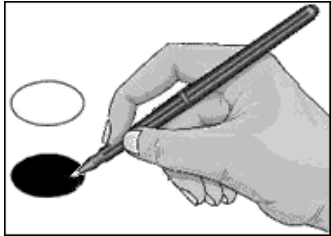
Sample Ballot
 Tyrrell County, North Carolina
 November 8, 2022

B0001



BALLOT MARKING INSTRUCTIONS:

- A. With the marking device provided or a black ball point pen, completely fill in the oval to the left of each candidate or selection of your choice as shown.
 B. Where authorized, you may write in a candidate by filling in the oval and writing the name on the Write-in line.
 C. If you tear, deface or wrongly mark this ballot, return it to request a replacement.



FEDERAL OFFICES	NC Court of Appeals Judge Seat 9 (You may vote for ONE)	DISTRICT OFFICES
<p>US Senate (You may vote for ONE)</p>	<p><input type="radio"/> Brad A. Salmon Democratic Party</p> <p><input type="radio"/> Donna Stroud Republican Party</p>	<p>NC District Court Judge District 2 - Seat 1 (You may vote for ONE)</p>
<p><input type="radio"/> Matthew Hoh Green Party</p> <p><input type="radio"/> Cheri Beasley Democratic Party</p> <p><input type="radio"/> Shannon W. Bray Libertarian Party</p> <p><input type="radio"/> Ted Budd Republican Party</p> <p><input type="radio"/> Write-in</p>	<p>NC Court of Appeals Judge Seat 10 (You may vote for ONE)</p>	<p><input type="radio"/> Darrell B. Cayton, Jr. Democratic Party</p>
<p>US House of Representatives District 1 (You may vote for ONE)</p>	<p><input type="radio"/> John M. Tyson Republican Party</p> <p><input type="radio"/> Gale Murray Adams Democratic Party</p>	<p>NC District Court Judge District 2 - Seat 2 (You may vote for ONE)</p>
<p><input type="radio"/> Don Davis Democratic Party</p> <p><input type="radio"/> Sandy Smith Republican Party</p>	<p>NC Court of Appeals Judge Seat 11 (You may vote for ONE)</p>	<p><input type="radio"/> Regina Rodgers Parker Democratic Party</p>
STATE OFFICES	<p><input type="radio"/> Darren Jackson Democratic Party</p> <p><input type="radio"/> Michael J. Stading Republican Party</p>	COUNTY OFFICES
<p>NC Supreme Court Associate Justice - Seat 3 (You may vote for ONE)</p>	<p>NC State Senate District 3 (You may vote for ONE)</p>	<p>Board of Commissioners (You may vote for ONE)</p>
<p><input type="radio"/> Richard Dietz Republican Party</p> <p><input type="radio"/> Lucy Inman Democratic Party</p>	<p><input type="radio"/> Bobby Hanig Republican Party</p> <p><input type="radio"/> Valerie Jordan Democratic Party</p>	<p><input type="radio"/> Jordan R. Davis Republican Party</p> <p><input type="radio"/> Florian Deltgen Unaffiliated</p> <p><input type="radio"/> Nina Basnight Griswell Democratic Party</p> <p><input type="radio"/> Brenda Respass-Wynn Democratic Party</p>
<p>NC Supreme Court Associate Justice - Seat 5 (You may vote for ONE)</p>	<p>NC House of Representatives District 1 (You may vote for ONE)</p>	<p>Clerk of Superior Court (You may vote for ONE)</p>
<p><input type="radio"/> Sam J. Ervin IV Democratic Party</p> <p><input type="radio"/> Trey Allen Republican Party</p>	<p><input type="radio"/> Edward C. Goodwin Republican Party</p>	<p><input type="radio"/> Angie Etheridge Sexton Democratic Party</p>
<p>NC Court of Appeals Judge Seat 8 (You may vote for ONE)</p>	<p>NC House of Representatives District 1 (You may vote for ONE)</p>	SHERIFF
<p><input type="radio"/> Julee Tate Flood Republican Party</p> <p><input type="radio"/> Carolyn Jennings Thompson Democratic Party</p>	<p style="text-align: center;">- VOTE BOTH SIDES -</p>	<p>Sheriff (You may vote for ONE)</p>
<p><input type="radio"/> R. Kevin Sawyer Democratic Party</p>	<p style="text-align: center;">Continue Voting next side ➔</p>	<p><input type="radio"/> R. Kevin Sawyer Democratic Party</p>
	North Carolina	Ballot Style B0001

SAMPLE BALLOT

NONPARTISAN OFFICES		
Soil and Water Conservation District Supervisor (You may vote for TWO)		
<input type="radio"/> Danielle Davis Carawan		
<input type="radio"/> Carl Jones		
<input type="radio"/> Write-in		
<input type="radio"/> Write-in		
End of Ballot		
	<p align="center">- VOTE BOTH SIDES -</p>	
	<p align="center">North Carolina</p>	<p align="center">Ballot Style B0001</p>