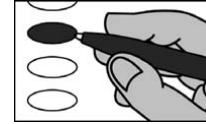


Sample Ballot - Republican Party Primary
Tyrrell County, North Carolina
March 3, 2026

R0004**BALLOT MARKING INSTRUCTIONS**

- A. With the marking device provided or a black ball point pen, completely fill in the oval to the left of each candidate or selection of your choice as shown.
- B. If you tear, deface or wrongly mark this ballot, return it to request a replacement.

**PARTISAN NOMINATIONS****NC House of Representatives
District 1**

(You may vote for ONE)

US Senate

(You may vote for ONE)

- ☐ Margot Dupre
- ☐ Richard Dansie
- ☐ Donald M. (Don) Brown
- ☐ Michael Whatley
- ☐ Elizabeth A. Temple
- ☐ Michele Morrow
- ☐ Thomas Johnson

☐ John C. Spruill☐ Edward C. Goodwin**NC District Court Judge
District 2 Seat 2**

(You may vote for ONE)

☐ Lloyd Williams☐ Shannon A. Jarvis**End of Ballot****US House of Representatives
District 1**

(You may vote for ONE)

- ☐ Laurie Buckhout
- ☐ Asa Buck
- ☐ Ashley-Nicole Russell
- ☐ Eric Rouse
- ☐ Bobby Hanig

**NC Court of Appeals Judge
Seat 1**

(You may vote for ONE)

- ☐ Michael C. Byrne
- ☐ Matt Smith

**NC State Senate
District 1**

(You may vote for ONE)

- ☐ Dave Forsythe
- ☐ Jerry Tillett
- ☐ Jay Lane
- ☐ Cole Johnson