

Web Site Links:

www.ncdps.com (NC Dept. of Public Safety)

www.readync.org

www.ready.gov

www.ncfloodmaps.com

www.floodsmart.com

www.weather.gov

www.tyrrellcounty.org

Media Emergency Notification Sites:

TV Stations:

Channel 7 - WITN

Channel 8 - WFXI

Channel 9 - WNCT

Channel 12 - WCTI

Radio Stations:

WRSF - DIXIE 105.7

WERX 102.5 The Shark

WXNL-KDH 104.1 FM

Utilities:

Dominion Power - 1-866-366-4357

Century Link - 1-800-788-3600

County Commissioners

Nathan T Everett, Lawrence Swain, Nina Griswell,
Jordan Davis, Carl Willis

David L. Clegg, County Manager

Hyper-Reach

Register Now for "Your" County's Emergency Alert System



Sign Up for Emergency Alerts

From Tyrrell County

4 ways to sign up:

Web: Go to bit.ly/TyrrellCountyAlertSignup and fill out the form.

Text: text TyrrellAlerts to 252-573-2265 and follow the link.

Speak: Call 252-573-2265 and answer the questions

Scan: Scan the QR code and fill out the form

Tyrrell Emergency Management

106 S. Water St.

PO Box 449

Columbia, NC 27925

Wesley Hopkins — EM Coordinator

252-796-4516

weshopkins@tyrrellcounty.net

For All Emergencies Dial

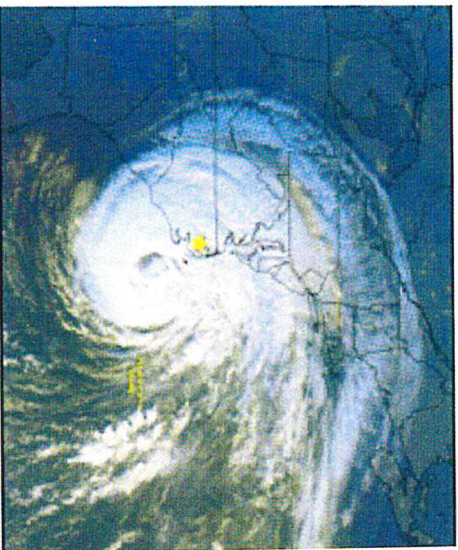
911



Tyrrell County

Citizen's Guide to Emergency Preparedness for Tropical Storms and Hurricanes





Being Prepared!

As a citizen of Tyrrell County you reside in the coastal region of North Carolina that is 3-5 feet above sea level and very susceptible to winds and flooding impacts of Tropical Storms and Hurricanes. Tyrrell County is a "risk" county, meaning that there are no pre tropical event (Tropical Storm or Hurricane) storm shelters available to the public. A post-storm shelter may be implemented depending on the storm. A post-storm shelter location's will be determined after the storm.

Before the Storm

- Make sure the phone number at which you would like to receive alerts is listed on Tyrrell County's reverse 911 system.
- Newport/Morehead City is the regional National Weather Service office, NOAA Weather Radio Channel 4
- All citizens are encouraged to create emergency storm kits that will provide self-sufficiency for up to 72 hours.
- Visit www.ncready.org for a full description of evacuation kit needs.
- If you evacuate or stay, have a copy of your driver's license, insurance information, proof of residency, and an additional form of ID (Social Sec. Card, Bank Card, etc.)
- Make a list of ALL REQUIRED MEDICATIONS
- If a MANDATORY EVACUATION is ordered, all emergency services (Fire/Rescue, EMS, and Law Enforcement) will be stopped until conditions improve.
- Evacuation shelters may be opened prior to the arrival of the storm. The locations of these shelters will be made available via Tyrrell County emergency media outlets.
- A State of Emergency may be enacted. During this time there may be a curfew and the sales of alcohol may be prohibited.



After the Storm

- Tyrrell Hall (906 Hwy 64 East, across from Speedway) is the Central Receiving and Distribution Point for all emergency supplies (water, ice, tarps, meals, cleanup kits, etc.)
- If the Central Receiving and Distribution Point (CRDP) is opened it will be made known through the Tyrrell County Emergency Media Outlets.
- All storm debris should be kept separated unless notified otherwise. Don't mix household trash with vegetative debris such as limbs and trees.
- Unless notified otherwise the Tyrrell County Landfill site located on 244 Smith Lane will be the site to accept all storm related debris; both household and vegetative.
- If a storm warrants a FEMA or NC State Disaster Declaration, the location of the Disaster Recovery Center will be Tyrrell Hall unless notified via the county emergency media outlets.
- If a Declaration is made, all citizens making claims will need proof of ID, address where property was damaged, insurance (if property was insured), tax card information, and deed. More information can be found at www.FEMA-ready.gov

